



Using your *Simplicity*TM Doorbell Signaler LT

⚠ Safety Instructions

WARNING: Not to be used as a visual public mode alarm notification appliance.

1. Read and understand all instructions.
2. Follow all warnings and instructions on the *Simplicity*TM Doorbell Signaler LT.
3. For indoor use only.
4. Unplug the Doorbell Signaler from the wall outlet before cleaning. Do not use liquid or aerosol cleaners. Use a damp cloth for cleaning.
5. Do not use the Doorbell Signaler near water, for example, near a bathtub, in a wet basement, or near a swimming pool.
6. The Doorbell Signaler should be operated only from the type of power source indicated on the marking label.
7. Do not allow anything to rest on the power cord of the lamp plugged into the Doorbell Signaler. Do not locate the Doorbell Signaler where people can walk on the lamp cord.
8. Do not overload wall outlets and extension cords.
9. To reduce the risk of electrical shock, do not disassemble the Doorbell Signaler. Take it to a qualified service person when service or repair work is required. Opening the unit or incorrect re-assembly can expose you to dangerous voltages or other risks. The Doorbell Signaler does not have any user-serviceable parts.
10. Unplug the Doorbell Signaler from the wall outlet and refer servicing to qualified service personnel under the following conditions: (a) when the plug is damaged; (b) if liquid has been spilled into the Doorbell Signaler; (c) if the Doorbell Signaler has been exposed to rain or water; (d) if the Doorbell Signaler does not operate normally; (e) if the Doorbell Signaler has been dropped and/or damaged; (f) if the Doorbell Signaler exhibits a distinct change in performance.
11. Adjust only those controls that are covered by the operating instructions. Improper adjustment of other controls may result in damage.

FCC Information

This equipment generates and uses radio frequency energy and if not installed and used properly, that is, in strict accordance with the manufacturer's instructions, may cause interference with the radio and television reception. The signaler has been tested and found to comply with the specifications for a Class B computing device in accordance with the specifications in Subpart J of Part 15 of the FCC Rules. These rules are designed to provide reasonable protection against radio frequency interference in residential installations.

There is no guarantee that interference will not occur during use. You can determine if this equipment causes interference to radio or television reception by turning the signaler on and off while the television or radio is on.

If this equipment does cause interference the user is encouraged to try to correct the interference by one or more of the following measures: (a) Reorient the radio or television receiving antenna; (b) Move the signaler further away from the radio or television; (c) Plug the signaler into a different outlet so it is on a different branch circuit than the television or radio; (d) If necessary, consult an experienced radio/television technician or the manufacturer for additional suggestions.

Ultratec shall repair or replace a defective product, at Ultratec's option, free of charge if returned to Ultratec, freight prepaid, within two years after the product has been shipped to Purchaser, provided, however, that Purchaser shall give Ultratec written notice within said time period of the fact of such defective product and shall also indicate in writing the nature of the defect upon returning the defective product to Ultratec.

This warranty covers defects in materials and workmanship only. It does not cover damage caused by accidents, defects, or damage resulting from misuse, abuse, or disregard for reasonable care, or damage caused by subjecting the product to unspecified electrical voltage or attaching inappropriate devices (including, but not limited to, damage caused by lightning and connecting the product to digital telephone systems).

Other than as stated herein, there are no other warranties, whether by sample or model, by description or quantity, whether expressed or implied, and there are no implied warranties of fitness for a particular purpose or of merchantability.

This warranty shall be limited to the foregoing obligations of Ultratec and specifically excludes any incidental or consequential damages resulting from defects in the product.

In the case that the product specified above is shipped to an Ultratec service center for warranty service, the owner is responsible for payment of shipping charges. Because damage during shipment is not covered by this warranty, the product should be insured for shipment by the owner.

Warranty Terms

Two-Year Limited Warranty

Ultratec, Inc. offers a two-year warranty for the *Simplicity*TM

Doorbell Signaler LT. Warranty

service is available through

Ultratec. If your product needs

service, return it to:

Ultratec National Service Ctr.

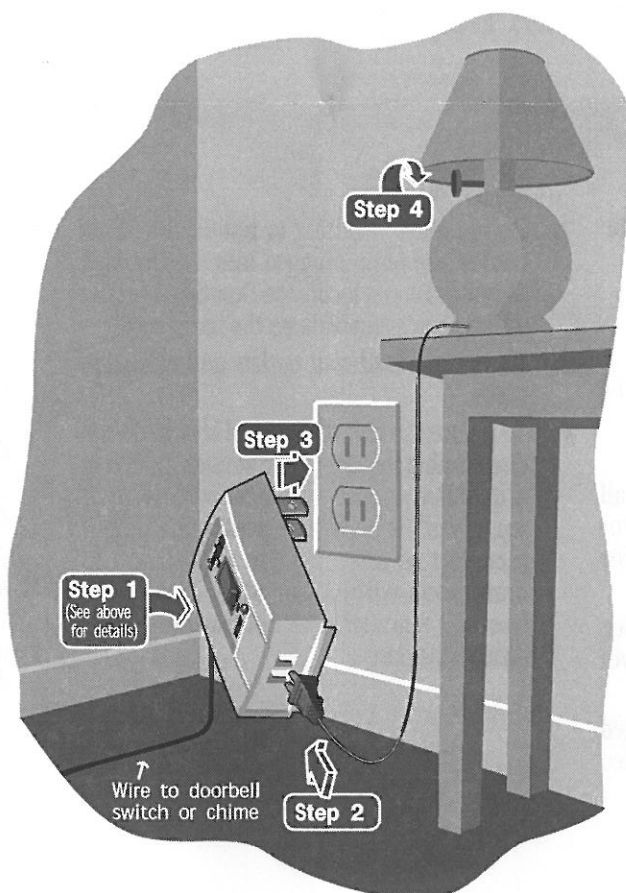
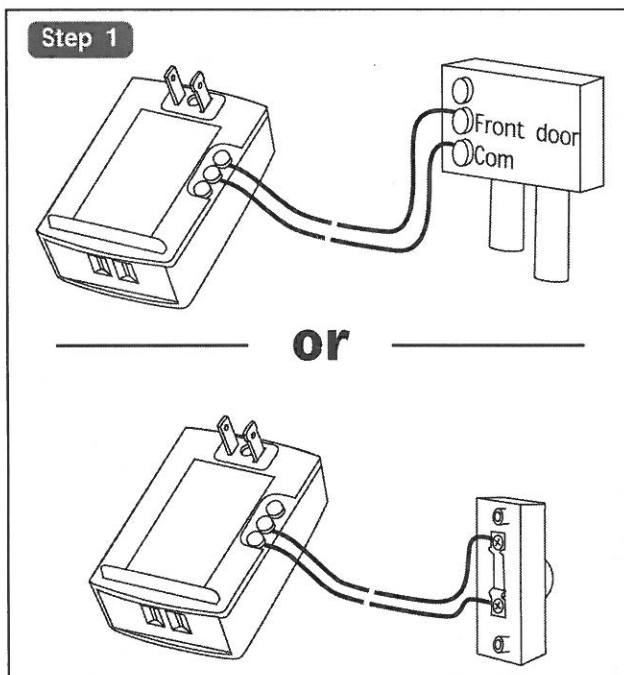
5901 Research Park Blvd.

Madison, WI 53719

Setup

1. Connect the doorbell wire to the doorbell switch or chime and to the terminals on the back of the *Simplicity*™ Doorbell Signaler LT. Use the top two terminals for a doorbell chime. Use the bottom two for a doorbell switch.
2. Plug the signaler lamp into the Doorbell Signaler.
3. Plug the Doorbell Signaler into an electrical outlet.
4. Using the switch on the lamp, turn the lamp on.

The switch on the lamp must always remain on to signal sounds. If you want to turn the lamp on and off for other purposes such as reading, use the Doorbell Signaler **On/Off Switch**.



Troubleshooting

Transmitting Problems

If the signal lamp does not flash when the doorbell button is pressed, check the following:

- If the red **Transmit** Light on the Doorbell Signaler does not blink when the doorbell button is pressed, the Doorbell Signaler is not properly connected.
- Be sure the Doorbell Signaler is properly plugged into a working electrical outlet.
- Be sure you have used the proper connectors and the wire is tightly connected.
- Do not plug the Doorbell Signaler into a power strip.
- If there is more than one *Simplicity* System operating in your building, they may interfere with each other.

Lamp Problems

If the red **Transmit** Light on the Doorbell Signaler blinks when the doorbell button is pressed, the Signaler is properly connected and the problem is with the lamp. Check the following:

- Be sure the lamp is plugged into the Doorbell Signaler.
- Be sure the lamp switch is on, and the lightbulb is working.
- Be sure that, if your electrical outlet is controlled by a wall switch, the switch is on.

Simplicity™ System

Other units that work with the Doorbell Signaler:



Simplicity™ Remote Receiver LR



Simplicity™ Remote Receiver LRD



Simplicity™ Remote Receiver SRD



Simplicity™ Add-On Strobe Light

Specifications

Physical Dimensions

Size: 2.65 x 4.0 x 1.75 in.
Weight: 4.6 oz.

Connections

120 Volt AC Outlet
Connector screws for doorbell switch or chime
300 Watts maximum load

Controls

Lamp On/Off Switch

Approvals

Safety: CSA NRTL/C
both US and Canada